

Vehicle conversion

WHEELCHAIR ACCESSIBLE VEHICLE

Opel Movano L2H2 / L3H2



OPEL
CERTIFIED
CONVERSION



Tomorrow's
safety today!

Image shows L3H2



www.amf-bruns.de

WHEELCHAIR ACCESSIBLE VEHICLE

Opel Movano L2H2 / L3H2



The wheelchair enters the vehicle via the lift; the AMF-Bruns PROTEKTOR system secures person and wheelchair.



The SMARTFLOOR system floor allows flexible transport of people with and without wheelchairs.

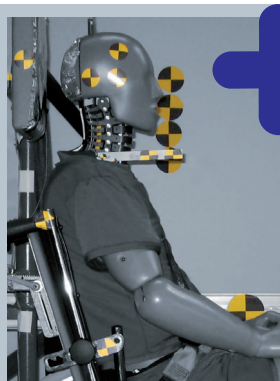


Electric step and handle on the side entry provide easy access to the passenger compartment.

THESE FACTS MAKE ALL THE DIFFERENCE

- » Flexible & individually planned SMARTFLOOR system floor
- » Quick & flexible arrangement of the interior due to removable single seats
- » SMARTSEATS with original upholstery or artificial leather
- » Wheelchair users can safely enter the vehicle via a lift (DIN 75078)
- » Linearlift AL1 is a fully automatic lift for the rear or side door; the see-through platform design allows excellent rear view
- » Electric step for easy access to the rear rows of seats
- » Interior trim and roof liner of the passenger compartment by AMF-Bruns
- » Head & backrest FUTURESAFE is reliable, ergonomically shaped and space-saving; available with floor or wall mounting

NOTE: Order vehicle as glazed panel van ex works



Tomorrow's safety today!

FUTURESAFE® Head- & backrest

FutureSafe is a safe, space-saving and comfortable patented safety system, which is flexibly customisable and comes with an integrated shoulder belt for the wheelchair occupant.

PROTEKTOR® Wheelchair & occupant restraint system

The AMF-Bruns Protektor restraint system meets DIN 75078 part II, ISO 10542.

PROSAFE® „Kraftknotenadapter“ Integrated lap belt

With the „Kraftknotenadapter“ system the wheelchair is quickly and precisely fitted to the vehicle's floor. It comes with a pelvis belt for the wheelchair occupant.

AMF-BRUNS PROVIDES THE MAXIMUM OF SAFETY

- » Safety-tested occupant & wheelchair restraint system PROTEKTOR from AMF-Bruns ensures that the wheelchair and its user are secured in the vehicle (DIN 75078-2)
- » Linear lift is EMC tested according to EU regulations
- » FUTURESAFE meets ISO 10542 and DIN 75078-2
- » Vehicle conversion according to DIN 75078-1/2



AMF-Bruns GmbH & Co. KG | Hauptstraße 101 | D-26689 Apen
Telefon +49 (0) 44 89 / 72 72 33 | Fax +49 (0) 44 89 / 62 45
hubmatik@amf-bruns.de

www.amf-bruns.de



DIN EN ISO 9001
REG.-NR. Q1 0105027